

Okapi EVO

6x160W LED 48V

Okapi EVO thanks to its generator Stage V it is able to lower consumption by 70% and in the same way reduce CO2 emissions. **Complete, safe, cost saving:** equipped with Stage V engine, Okapi complies with the latest European regulations on emissions.

RUNNING TIME

LIGHTING AREA

COST SAVING

SHIPMENT EFFICIENCY



Stability



LUMEN
120.000 lm

ENGINE
Kohler or Yanmar

Alternator
Linz Alumen

ILLUMINATED AREA
4300 sq m

ACOUSTIC EMISSION
61 dB @7m

ENGINE EMISSION
Stage V

AUTONOMY
436 hours

CONTROL UNIT
Deep Sea 3110

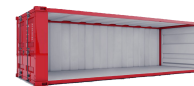
VOLTAGE
48 V



22X



13,5 m



18X



12 m