

Okapi PRO

4x320W LED 48V

OKAPI PRO is our **stationary** engine light tower. This lighting tower is equipped with multiple control and setting devices, making it a safe and effective product. Equipped with **Stage V engine**, Okapi complies with the latest European regulations on emissions.

RUNNING TIME

LIGHTING AREA

COST SAVING

SHIPMENT EFFICIENCY



Stability



LUMEN
166.000 lm

ENGINE
Kohler or Yanmar

Alternator
Linz Alumen

ILLUMINATED AREA
5000 sq m

ACOUSTIC EMISSION
61 dB @7m

ENGINE EMISSION
Stage V

AUTONOMY
436 hours

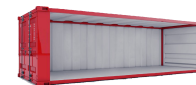
CONTROL UNIT
Deep Sea L401

VOLTAGE
48 V



13,5 m

22X



12 m

18X

